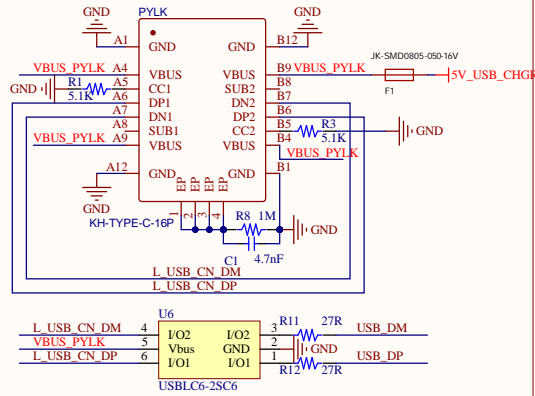
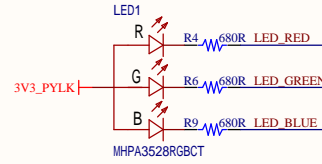


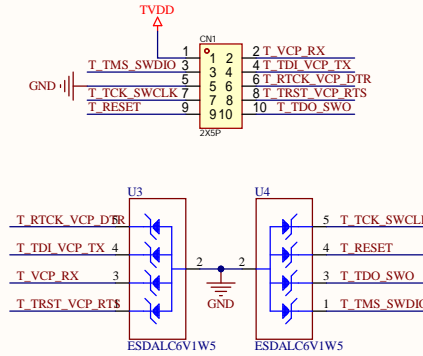
## USB



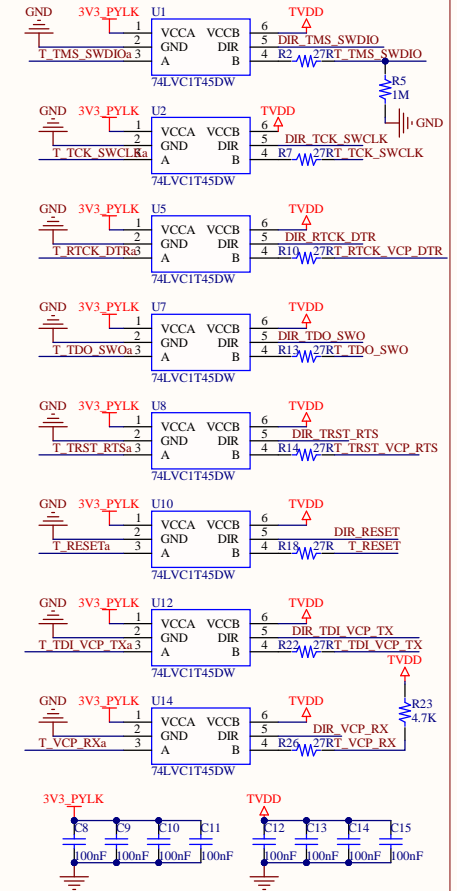
## LED



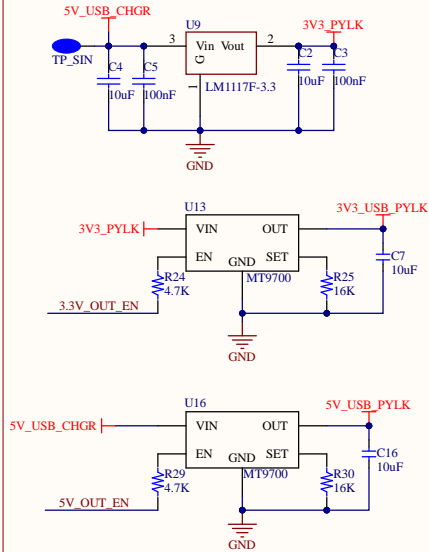
## Debug Connector



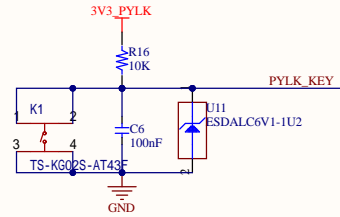
## Level Shift



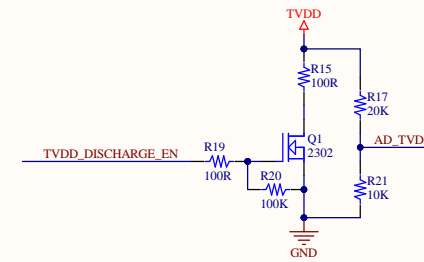
## Power



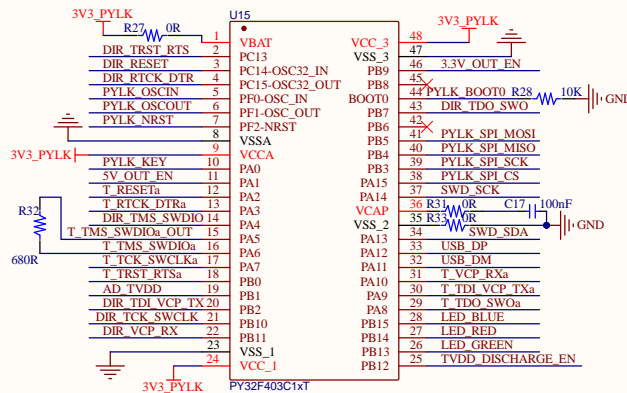
## Key



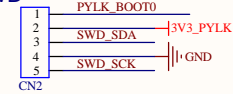
## ADC&Electric discharge



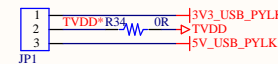
## MCU



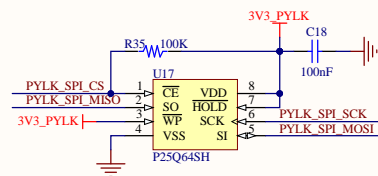
## SWD



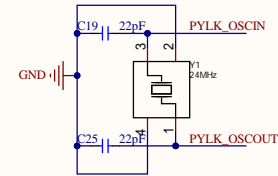
## TVDD\_Selection



## Flash



## OSC

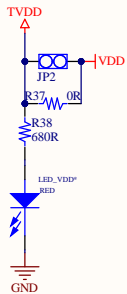


When the DIR pin is set to logic high (1), the data direction is from VCCA to VCCB.  
When the DIR pin is set to logic low(0), the data direction is from VCCB to VCCA

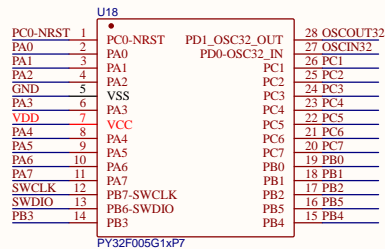
T TRST_VCP_RTS	T TRST_VCP_RTS
T RTCK_VCP_DTR	T RTCK_VCP_DTR
T TDI_VCP_TX	T TDI_VCP_TX
T VCP_RX	T TDI_VCP_TX
T TDO_SWO	T VCP_RX
T RESET	T TDO_SWO
T TCK_SWCLK	T TCK_SWCLK
T TMS_SWDIO	T TMS_SWDIO



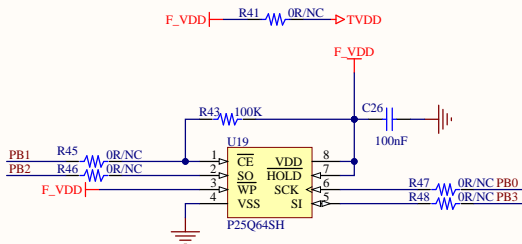
## VDD\_IDD Test



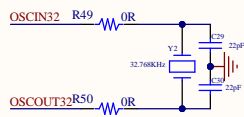
## MCU



## FLASH



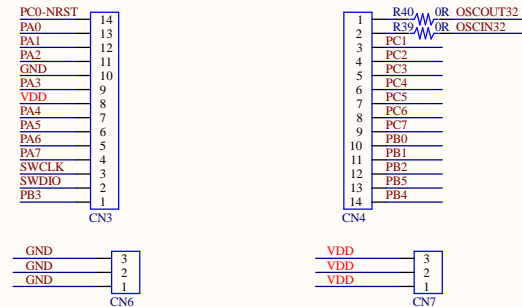
## OSC



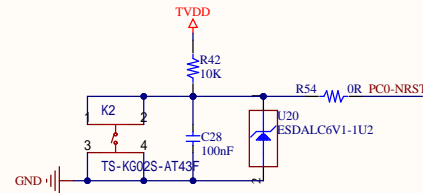
## Led



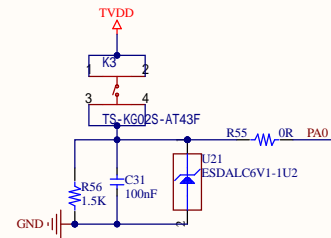
## Extension PIN



## NRST



## Key



## Debug Connector

